

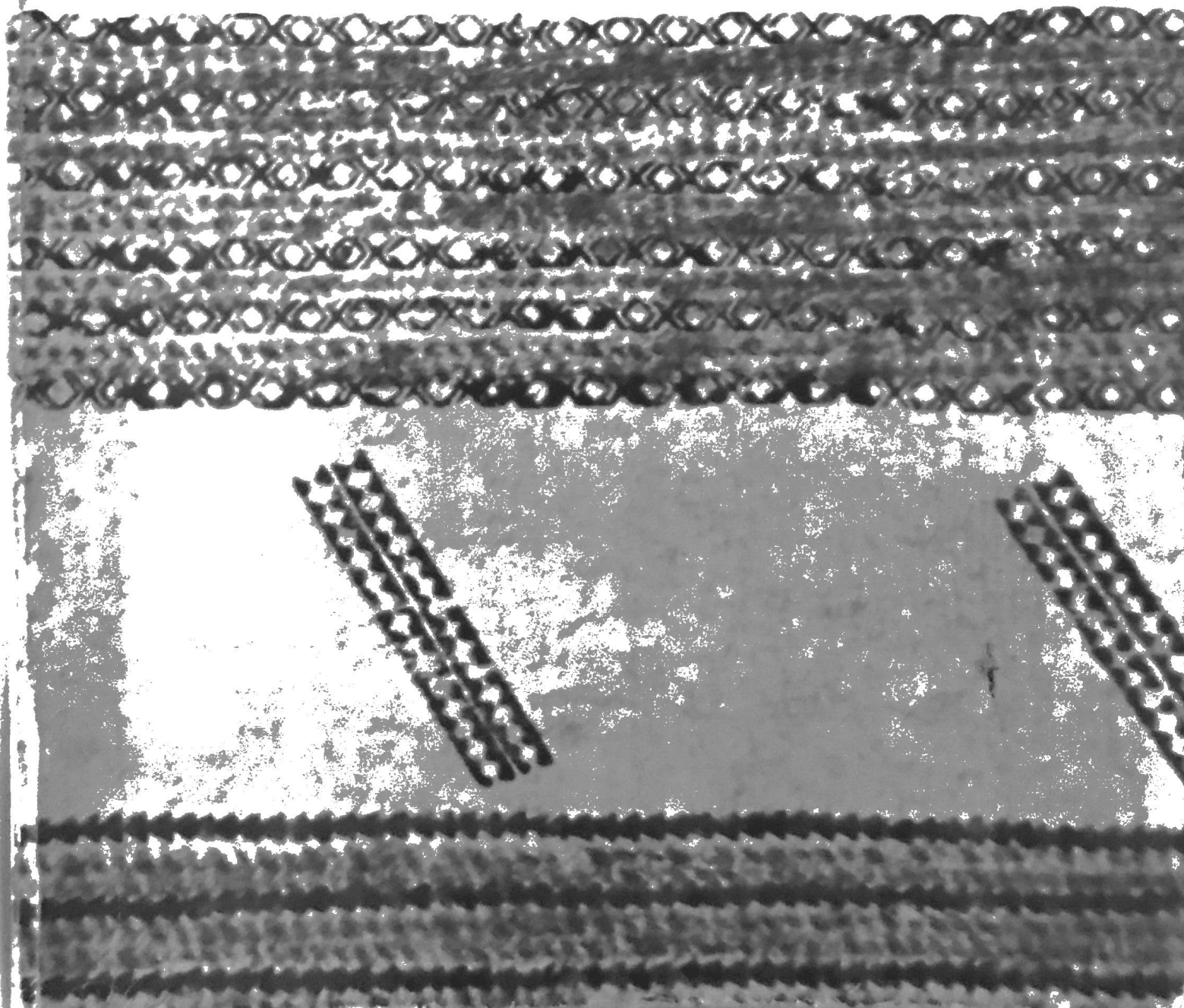
HAWAIIAN GENEALOGIES

EXTRACTED FROM HAWAIIAN LANGUAGE NEWSPAPERS

VOLUME 1

Edith Kawelohea McKinzie

Edited by Ishmael W. Stagner, II



MOOKUAUHAU ALII

Na Iwikuamoo o Hawaii Nei
Mai Kahiko Mai

HOAKAKA - O ka Mahi k i puka me kela mau helu aku nei, oia no ka Mahiolole k. He mea pono e maopopo keia poe Mahi k, no ka mea, he ekolu lakou, na keiki pono a ke Alii o Kohala, oia o Kanaloauoo k. Me ka wahine mua, oia o Kapuleiolaa w, loa o Kapaihi w; me Kihamoihala w, loa o Mahikapalena k; me Hoolaaikaiwi w hoi, loa o Mahiolole k me Mahikuku k.

EXPLANATIONS. The Mahi k who appeared in the last issue was the Mahiolole k. It is important to recognize these Mahi male individuals because there are three, the real children of the Chief of Kohala, namely Kanaloauoo k. With his first wife, Kapuleiolaa w was born Kapaihi w; with Kihamoihala w was born Mahikapalena k; with Hoolaaikaiwi w was born Mahiolole k and Mahikuku k.

KO KE KAMA'LIWAHINE ELIZABETA KEKAIKUIHALA KEKAANIAU PILI I NA KAMEHAMEHA

Relating to the Princess Elizabeth Kekaaniau
and her relationship to the Kamehamehas

1. Keawekekahialiiokamoku k pio ia Kalanikauleleiaiwi w, loa o Kalanikeeumoku k me Kekelaokalani w.
2. Kalanikeeumoku k noho ia Kamakaimoku w, loa o Kalanikupuapaikalaninui Keoua k.
3. Kalanikupuapaikalaninui Keoua k noho ia Kahikikala w, loa o Kalokuokamaile k.
4. Kalanikupuapaikalaninui Keoua k noho hou ia Kekuiapoiwa w, loa o Kamehameha I.
5. Kalokuokamaile k noho ia Kaloioikalani w, loa o Kaohelani w.
6. Kaohelani w noho ia Nuhi k, loa o G. Laanui k.
7. Gideon Laanui k mare ia Theresa Owana Rives, loa o Elizabetha Kekaikuihala Kekaaniau me Gideon Kailipalaki Laanui.
8. Gideon Kailipalaki Laanui mare ia Kamaikaopa w, loa o Thresa Owana Kaohelani.

Mai keia papa a me ka papa o na Kamehameha, loa keia iho:

From this listing and the listing of the Kamehamehas, the following was obtained.

(a) He kaikuuana o Kalokuokamaile no Kamehameha I.

(a) Kalokuokamaile is older brother of Kamehameha I

(e) He hoahanau pono na Kamehameha II me III me Kinau w pu no Kaohelani w me ke degere ekahi.

(e) Kamehameha II and III with Kinau w together are true cousins for Kaohelani w in the first degree.

(i) He hoahanau pono na Kamehameha IV me V no G. Laanui ma ke degere elua

(i) The Kamehamehas IV and V are true cousins for G. Laanui in the second degree.

(o) He hoahanau pono Ka Haku o Hawaii no Elizabeth Kekaikuihala Kekaaniau ma ke degere ekolu.

(o) The Prince of Hawaii is true cousin for Elizabeth Kekaikuihala Kekaaniau in the third degree.

Nolaila, ke kupunakane kualua o Kamehameha I. no ke Kama'liiwahine Elizabeta Kekaikuihala Kekaaniau.

Thus, Kamehameha I is great-great-grandfather for Princess Elizabeth Kekaikuihala Kekaaniau.

Nolaila, ma keia mau papa kuauhau ae la, ua maopopo, ma ka aoao o ko Kamehameha I makuahine, oia o Kekuiapoia me ko kupunawahine, oia o Kamakaimoku w, ko ka Moiwahine Liliuokalani mau pili ia i na Kamehameha.

Therefore, through these genealogical lists, the lines of Kamehameha's mother, namely Kekuiapoia, and grandmother, namely Kamakaimoku w, are made clear where Queen Liliuokalani's relationship is established to the Kamehamehas.

Ko ka Moiwahine Kanemake Kapiolani pili hoi ma o Kanekoa Ia, kaikaina o Kalanikupuapaikalaninui Keoua a Kalanikeeaumoku k.

The Dowager Queen Kapiolani's relationship is through Kanekoa, younger brother of Kalanikupuapaikalaninui Keoua, son of Kalanikeeaumoku k.

Ko ke Kama'liiwahine Elizabeth Kekaikuihala Kekaaniau pili hoi i na Kamehameha, mai ia Kalanikupuapaikalaninui Keoua mai, no ka makuakane like o kona kupunakane kualua pono, oia o Kalokuokamaile a me Kamehameha I, o Kekuiapoia w, ma o Keke-laokalani Ia, ko lakou kupunawahine kuaha pono i pili ai.

- The Princess Elizabeth Kekaikuihala Kekaaniau's relationship to the Kamehamehas stems from Kalanikupuapaikalaninui Keoua who fathered both of their great-great-grandfathers, that is, Kalokuokamaile and Kamehameha I. Kekuiapoiwa w through Kekelaokalani was their own great-great-great-great-grandmother.

KEKAHI O NA MOOPUNA A KAUMUALII, MOI O KAUAI **SOME OF THE DESCENDANTS OF KAUMUALII, KING OF KAUAI**

1. Kaumualii noho ia Naluahi w, loa o Kukiiahu w.

1. Kaumualii married Naluahi w, and had Kukiiahu w.

2. Kukiiahu w noho ia (he haole Rukini), loa o Kapule w. I kela mahina aku nei no kona make ana i ke 88 o kona mau makahiki o ke ola ana.

2. Kukiiahu w married a Russian and had Kapule w. Last month she died in the 88th year of her life.

3. Kaumualii noho ia Makua w, loa o Nahinu w.

3. Kaumualii married Makua w and had Nahinu w.

MOOKUAUHAU ALII

Na Iwikuamoo o Hawaii Nei
Mai Kahiki Mai
(Mai ka Helu 18)

**KA PILI O NA ALII KIEKIE O KA AINA I KEKAHI ME KEKAHI,
PELA I KE ALIIAIMOKU**

**KO KA MOIWAHINE KANEMAKE KAPIOLANI -
NA KAMA'LII WAHINE ELIZABETH KEKAIKUIHALA KEKAANIAU
ME RUTH KEELIKOLANI, A ME KO A. K. PALEKALUHI MA MAU PILI**

**THE RELATIONSHIP OF THE HIGH CHIEFS OF THE LAND TO ONE ANOTHER
AND ALSO THE RULING CHIEFS**

**QUEEN KAPIOLANI'S RELATIONSHIP,
THE PRINCESSES ELIZABETH KEKAIKUIHALA KEKAANIAU
AND RUTH KEELIKOLANI, AND A. K. PALEKALUHI & OTHERS**

1. Ka mea kaulana loa ka Moi Lonoikamakahiki k noho ia Kaikilani w, Aliiwahine o Puna, loa o Keawehanauikawalu k me Kaihikapumahana w.

1. The renowned King, Lonoikamakahiki k, who married Kaikilani w, Chiefess of Puna, had Keawehanauikawalu k and Kaihikapumahana w.

Pertaining to the line of A. K. Palekaluhi

2. Kaihikapumahana noho ia Aila k, loa o Kawelo-a-Aila k.

3. Kawelo-a-Aila k noho ia Kauakahihelikeiwi w, loa o Kuluwahi k, Kahalanamoino k me Holau w.

4. Kuluwahi k noho ia Po'u w, loa o Kalawaia k.

5. Kalawaia k noho ia Umimahihelima w, loa o Holau w II.

6. Holau w II noho ia Jean Jassin Rives, loa o Theresa Owana, Virginia Kahoa Kaahumanu me John L. Rives.

7. Theresa Owana Rives mare ia Gideon Laanui, loa o Elizabeth K. Kekaaniau me Gideon Kailipalaki Laanui.

8. Gideon Kailipalaki Laanui mare ia Kamaikaopa w, loa o Theresa Owana Kaohelalani Laanui.

9. Theresa Owana Kaohelalani Laanui me Alex. J. Cartwright, Jr., loa a Daisy Napulahaokalani me Eva Kuwailanimamao Cartwright, a me R. W. Wilikoki, loa o Roberto Kalanikupuapaikalaninui Keoua me Virginia Kahoa Kaahumanu Kaihikapumahana Wilcox.

KO KAPIOLANI MA

10. Holau w noho me ka Moi Kekaulike o Maui loa o Kekauhiwamoku k, Kaeokulani k me Manuhaaipo w.

11. Kaeokulani k noho ia Kamakahelei w, Moiwahine o Kauai, loa o Kaumualii k.

12. Kaumualii k, Moi o Kauai, noho ia Kapuaamohu w, loa o Keliiahonui k me Kinoiki w.

13. Kinoiki w noho me Kuhio k, loa ka Moiwahine Kanemake Kapiolani, no Kama'liiwahine Virginia Kapooloku Poomaikelani me Kinoiki Kekaulike w.

14. Ke Kama'liiwahine Kinoiki Kekaulike mare ia David Kahalepouli Piikoi, loa no Kama'liikane David Kawanakoa, Edward Abnel Keliiahonui me Jonah Kuhio Kalania-naole.

KO RUTH KEELIKOLANI

15. Kekauhiwamoku k (kaikuaana o Kaeokulani) noho ia Haalou w, loa o Kauhiwawa-eono k me Kuapoiula w.

16. Kauhiwawa-eono k noho ia Hauwahine, loa o Keoua w, Kanahoahoa k me Kalolena w.

17. Keoua w noho ia Pauli Kaoleioku, loa o Pauahi w.

18. Pauahi w noho ia M. Kekuanaoa, loa o Ruth Keelikolani.

KO A. K. PALEKALUHI MA

19. Manuhaaipo w noho ia Kamehamehanui k, loa o Kalaniulumoku k.

20. Kalaniulumoku k noho ia Kualii w, loa o Loeau w I.

21. Loeau w I, noho ia Koakanu I, loa o Liliha w.

Mai keia Liliha w aku, loa na pua lehulehu, A. K. Palekaluhi, a pela aku.

Nolaila, ma keia kuauhau ae la, he mau hoahanau ponoī loa ka Moiwahine Kanemake Kapiolani me ke Kama'liiwahine Elizabeth K. Kekaaniau ma ke degere eha, pela hoi na Kama'lii David Kawanana-koa me J. K. Kalaniana'ole, he mau hoahanau ponoī loa laua no Theresa Owana Kaohelani me ke degere elima, nolaila, he mau keiki o Daisy Napulahaokalani, Eva Kuwailanimamao, Roberto Kalanikupuapaikalaninui Keoua me Virginia Kahoa Kaahumanu Kaihikapumahana ma ke degere eha na Kama'lii David Kawanana-koa me J. K. Kalaniana'ole.

Therefore, in this genealogy, the Dowager Queen Kapiolani is a true cousin to Princess Elizabeth K. Kekaaniau in the fourth degree, also to Princes David Kawanana-koa and J. K. Kalaniana'ole, they are true cousins to Theresa Owana Kaohelani in the fifth degree; therefore, the children Daisy Napulahaokalani, Eva Kuwailanimamao, Roberto Kalanikupuapaikalaninui Keoua and Virginia Kahoa Kaahumanu Kaihikapumahana are related in the fourth degree for the Princes David Kawanana-koa, and J. K. Kalaniana'ole.

Ma keia kuauhau no, he hoahanau ponoī loa no ka Moiwahine Kanemake Kapiolani ma ke degere ekolu, o Pauahi, makuahine o Ruth Keelikolani, me Liliha, makuahine o A. K. Palekaluhi ma. No ke Kama'liiwahine Elizabeth K. Kekaaniau hoi, he hoahanau ponoī loa keia mau aliiwahine ae la ma ke degere eha.

In this genealogy, the Dowager Queen Kapiolani is a true cousin in the third degree to Pauahi, mother of Ruth Keelikolani, and to Liliha, mother of A. K. Palekaluhi and relatives. Princess Elizabeth K. Kekaaniau is a true cousin to these chiefesses in the fourth degree.

Ina hoi e kii a ma ka papa kuauhau o Hawaii, hahau mai ia Keawenui k me Kalanikauleleiaiwi w, no ko ka Moiwahine Kanemake Kapiolani me ke Kama'liiwahine Elizabeth K. Kekaaniau, a o ko ke Alii-aimoku Liliuokalani mai ia Keawenui k me Lonoma-aikanaka w mai, alaila, e loa keia mau pili o kekahi i kekahi. He hoahanau ke Alii-aimoku Liliuokalani no G. Laanui ma ke degere eha, nolaila, he kaikamahine o Elizabeth K. Kekaaniau na ke Alii-aimoku.

If we obtain the genealogical lists of Hawaii and through them are able to build back to Keawenui k and Kalanikauleleiaiwi w for those in the lines of Dowager Queen Kapiolani, and Princess Elizabeth K. Kekaaniau, and the ruler Liliuokalani to Keawenui k and Lonoma-aikanaka w, then we will have these relationships to one another. The ruler Liliuokalani is a cousin to G. Laanui in the fourth degree; and thus Elizabeth Kekaaniau is a relative of the ruler.

Ma ia papa no, he hoahanau ke Alii-aimoku Liliuokalani no ka Moiwahine Kanemake ma ke degere eha. Ma ke kuauhau iho e kono ana o Lonoikahaupu o Kauai, alaila, he kaikamahine ke Alii-aimoku no ka Moiwahine Kanemake Kapiolani.

(Aole i pau)

In this list, the ruler Liliuokalani is a cousin of the Dowager Queen Kapiolani in the fourth degree. In this genealogy Lonoikahaupu of Kauai is found, thus, the ruler is related to Dowager Queen Kapiolani.

O ka makuahine o na Kamehameha II me III, o ia ke kama'liiwahine kapu loa, Kalanikauikaalaneo Keopuolani. He Aliiwahine keia i komoia e ka pili o na alii kiekie a pau o Hawaii, Maui, Oahu nei me Kauai.

(Aole i pau)

THE KAMEHAMEHAS AND THEIR KAPUS

Kamehameha I had the wohi kapu; he is the one who was given these names: The Napoleon of the Pacific, The Conqueror of Hawaii, He is not the First and the Last.

He is the true great-great-grandson of King Keaweikekahialiiookamoku and Queen Kalanikauleleiaiwi of Hawaii. A true grandson of King Kalanikeeaumoku, the one for whom the burning and raging kapu, also Kekelaokalani. Through the former the father, and through the latter the mother; namely through Kalanikeeaumoku came his father Kalanikupuapaikalaninui Keoua, younger brother of King Kalanieiwakamoku Kalaniopuu, and younger brother of Kanekoa, and through Kekelaokalani, the true sister of Kalanikeeaumoku, Kekuiapoewa II his real mother.

The story is revealed thus: By the time Kekuiapoewa II was old enough and fit for marriage, the parents greatly thought about the right husband for the sacred princess and decided no other fit husband than her own cousin living in Hana, Maui, with his high chiefly wives, that is Kalanilehua and Kahikikala. These were chiefesses and theirs were "hoolewa i ka la kapu," a kapu where no shadow could fall on them; that was the reason for Kalanikupuapaikalaninui Keoua's going to Maui in the days of his youth and the prize obtained was Prince Kalokuokamaile. Upon his return to Hawaii and united with his cousin Kekuiapoewa II, the prize offspring gotten was Hawaii's outstanding conqueror Kamehameha I; the one shown in the previous issue as a child sired by Kahekili. However, the opinions of the historians are divided. This is the real truth. No Arabian horse emerges from any female horse when there is no Arabian stud. Thus with men, the brave and fearless man is not gotten if he is not from the brave breed on the side of the father or mother. The blood is the thing that continues to show. If the blood is of a humble servant, the work that comes forth is humble work, and if it is a chiefly and brave blood the work that comes forth is majestic.

This perhaps is one reason Kamehameha I is much thought to be from Kahekili, the powerful and much feared king of Maui. Nevertheless, there are strong people on that side, namely Kalaniopuu and Kalanikupuapaikalaninui Keoua who were King Alapainui's war leaders. The children of Kalanikupuapaikalaninui Keoua were fighters and Kamehameha I the most outstanding. However, one thing is very well understood; Kekuiapoewa was the royal wife of Kalanikupuapaikalaninui Keoua, therefore, the child by him.

The mother of Kamehameha II and III was the very sacred princess Kalanikauikaalaneo Keopuolani. This is a chiefess included in the relationship of all the high chiefs of Hawaii, Maui, Oahu, and Kauai.